

---

# Make futures brighter with a gift in your will

---



Your guide to leaving a legacy with Age  
Concern Southend

---



# Thank you for thinking about leaving a gift in your will and helping to ensure brighter futures for older people across Southend

---

**Dear friends,**

Asking for help is very difficult; but as a small, independent charity we understand the need to continue the work that our wonderful volunteers carry out on a daily basis in order to support people in their later years and help them maintain the lifestyle they wish to lead. We know that most people want to stay in their own home, so the core of our activities is designed to help people lead independent lives and maintain regular contact with the outside world.

I appreciate its not easy to think about writing a will; it's something to 'do some other day'. However, putting your wishes in place now will ensure your family and friends are looked after should anything happen to you, and by including a legacy for us, you are guaranteeing that this charity continues its valuable work and delivers key services to our older residents for many years to come.

Thank you so much for your support.

With best wishes

*Lin*

Lin  
Chief Executive

P.S. Remember to seek professional advice when writing your Will.



# Contents

---

## ABOUT AGE CONCERN SOUTHEND

About us  
What needs are we addressing  
How we help

## LEAVING A GIFT IN YOUR WILL

How your gift will help  
Types of gifts  
Your gift could...

## WHAT TO DO NEXT

How to leave a gift in your will  
Our promise  
Talk to us



# About Us



SOUTHEND ON SEA CIO





# A LITTLE ABOUT US

---

**Age Concern Southend on Sea have been helping older people across Southend since 1974**

We are a small, independent charity who are not affiliated to and receive no funding from national charities such as Age UK. We focus entirely on the needs of people in our communities across the Southend, Rochford and Castle Point boroughs of Essex, enabling older people locally to reduce their isolation, maintain their independence and enjoy life to the fullest.

We provide:

- \*Telephone and Face to Face Befriending
- \*Community Transport
- \*Wheelchair Hire
- \*Community Clubs including Club 50+
- \*Hearing Aid Battery Replacement
- \*Advice and Support



## What needs are we addressing?

---

In the UK today, over 3.6 million older people live alone. While some enjoy a good quality of life, many struggle with declining health and isolation.

For so many, loneliness is a major issue in later life, with 1 in 10 people aged 65 or over saying they always or often feel lonely.

It is now widely recognised that isolation and loneliness have a major impact on quality of life, health and even life expectancy. According to a recent study, loneliness is as big a killer as obesity and as harmful to health as smoking 15 cigarettes a day.

With people living longer, the UK is also seeing a rise in the number of those living with dementia and other health issues, which is a major challenge to families, the NHS and the care system.

In the Southend area nearly 6,500 over 75's live alone. Many see no one from one day to the next, especially if their mobility is limited and they cannot go out. They long for basic human contact to brighten their days.

Tackling this crisis of loneliness and isolation is our mission.



## How we help

---

"It's very lonely being on my own after my wife died and having someone to come round who I can talk to about what's going on in the world and things like boxing, snooker and football is a great help. "

**Barry, 86**

At Age Concern Southend on Sea, we offer a range of support, enabling older people locally to reduce their isolation, maintain their independence and enjoy life to the full. Whether they live in Southend, Rochford or Castle Point, we are there for them when they need us.

Our support includes befriending, a transport service, advice and information, wheelchair hire and community clubs in a variety of locations. Most of this is delivered by our team of dedicated volunteers, who enable us to help over 1,000 local people every year

Our services are preventive too, enabling people to stay well for longer and to access help in the community thereby keeping them out of hospital or care.

We know our services are needed by many more people than we can currently reach, so your support is vital to help support even more older people in our community.

Leaving  
a gift

**AGE**  
*Concern*

SOUTHEND ON SEA CIO





## By leaving a gift in your will you will be supporting the vital work we do

---

### We are beating loneliness in our community

Over 300 older people currently make use of our telephone and face to face befriending service where a volunteer visits or speaks to them once a week. Your gift could help to reach even more older people by funding DBS checks for new volunteers and providing training such as safeguarding for staff and volunteers.

### We help older people get to vital medical appointments

In 2017 we provided over 4000 community transport lifts to help older people get to medical appointments, to visit friends and family and to go to the shops, hairdressers or community clubs. Your gift could help us maintain our minibus or even help us pay for more wheelchair friendly vehicles.

### We help older people to remain independent and to live life to the full

A gift left to Age Concern Southend could help us set up more community clubs, provide more services such as advocacy or podiatry, help more people have access to wheelchairs and mobility equipment and provide more help and support for older people in our community as well as securing our charity's future for generations to come. Even a small gift can make a huge difference.

# Types of gifts

---

## **Residuary Bequest**

A gift of what is left of your estate or a share of what is left, after other bequests to your family and friends have been made and all debts, taxes and expenses have been paid

## **Contingent Bequest**

A gift in your will that depends on something else happening. For example, it could mean leaving a gift in a will to charity only if other beneficiaries die before the person making the will.

## **Specific Bequest**

A particular item of value is gifted, such as stocks and shares, proceeds of a Life Assurance Policy, property, furniture, jewellery, buildings and land.

## **Pecuniary Bequest**

A specified sum of money decided when the will is written





## Your gift could...

---

Pay for class tutors for community club activities such as tai chi, yoga, snooker, art classes and speakers.

Help maintain our community transport vehicles including our wheelchair friendly minibus (or even purchase more vehicles!)

Fund DBS checks and training for our volunteers to ensure the safety and security of older people who use our services

Help to provide more services to older people in Southend such as advocacy, cookery classes, podiatry and much more

Pay for premises, staff costs and marketing materials to help our charity continue to provide advice, support and services for many years to come

Make events such as our free Christmas lunch for older people possible by helping us pay for food, equipment and more

Fund the designing and printing of our free bi-annual magazine and services directory





# Next Steps

**AGE**  
*Concern*

SOUTHEND ON SEA CIO



# How to leave a gift in your will

## First steps

Making a will is an important step that will help to ensure that your loved ones are looked after when you are gone, but after you have taken care of your friends and family there may be a little left over that you choose to donate to a charity close to your heart.

A gift in your will can be as small as a pound or two or can be as big as your entire estate, that choice is entirely up to you and any gift is always incredibly appreciated by us here at Age Concern Southend.

## Seek advice

Making a Will is one of the most important decisions you will ever make so be sure to talk to your family, friends or an independent professional when thinking about writing your will.

Wills are relatively straight forward but seeking professional advice from a will writer or solicitor means that you can feel safe in the knowledge that your will is legally sound and that it does exactly what it is supposed to.

## Leave a gift

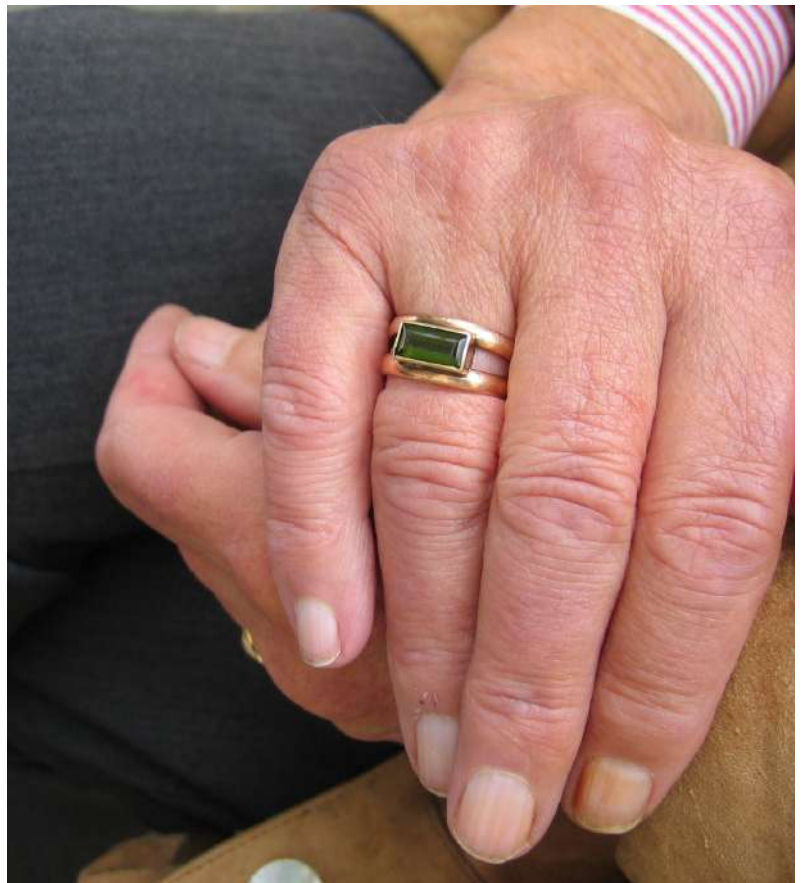
If you choose to leave a gift to your favoured charity in your will you will need to make a note of their charity name, address and registered charity number to give to your professional advisor.

In the case of our charity our these details would be as follows:

Age Concern Southend on Sea CIO  
Registered charity number: 1160916  
134 Hamlet Court Road,  
Westcliff, Essex ,SSO 7LN

# Our promises

---



- We promise not to put any pressure on you - your legacy is your decision to make in your own time.
- We promise to use your gift in the best possible way to help the older people of Southend, Castle Point and Rochford live happier, longer and fuller lives.
- We understand your need to put family first and promise never to ask you to put our charity's needs above your own.
- We promise to respect your right to privacy, you do not have to tell us about your decision or the size or type of your legacy.
- We promise to keep you updated about the progress we are making if you would like to hear from us.
- We promise to always be understanding, circumstances change and we understand their may come a time when you no longer wish to give to Age Concern Southend, or that the size or type of your gift may change.
- We promise to always be here to show you around, tell you about our projects and, of course, support you should you ever need our services.



# Talk to us about your gift

---

We'd love to hear from you

If you would like to arrange an appointment with our CEO to talk about leaving a gift in your will to Age Concern Southend please get in touch with our team on 01702 345373 or by emailing us on [enquiry@acsos.co.uk](mailto:enquiry@acsos.co.uk).

We promise that during your appointment we will not pressure you to change your will or to leave us a gift and we will always recommend that you seek independent professional advice before making or altering your will.





# Thank you!

We couldn't do the work we do without the help of dedicated supporters such as yourself. Please do let us know if you leave a gift to Age Concern Southend as we would love to thank you for your help and support.

If you would like to find out more about our services, or would like to become a volunteer or donate to Age Concern Southend please contact our team on 01702 345373 or email us on [enquiry@acsos.co.uk](mailto:enquiry@acsos.co.uk).